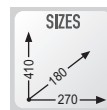
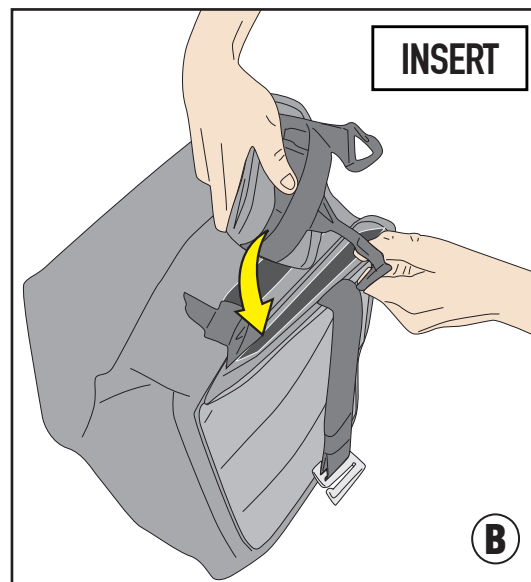
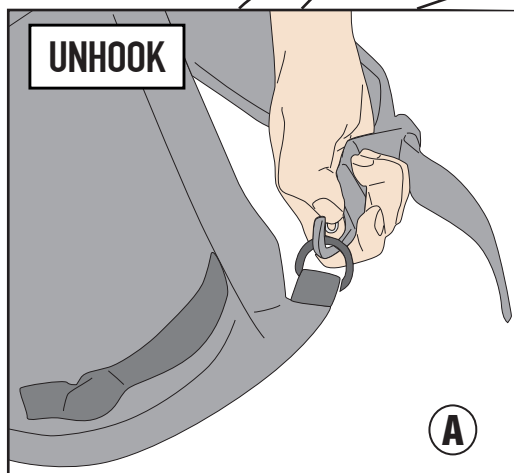
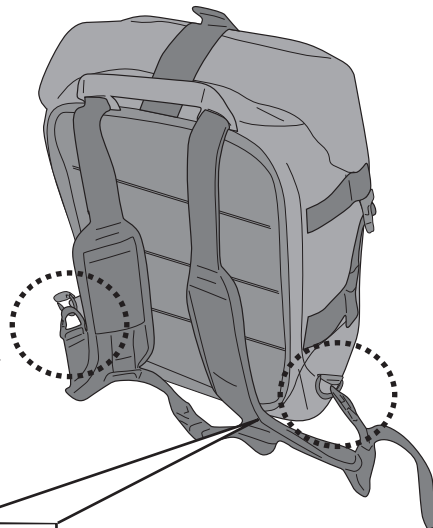


# CRM101

ZAINO TRASFORMABILE IN BORSA DA SELLA, 18 LT - RUCKSACK WHICH CAN ALSO BE USED AS A SADDLE BAG, 18 LTR  
IN SATTeltasche UMWANDELBARER RUCKSACK, 18 L - SAC À DOS CONVERTIBLE EN SAC DE SELLE, 18 LITRES  
MOCHILA TRANSFORMABLE EN BOLSA SILLÍN, 18 LTS - MOCHILA MODULÁVEL EM BOLSA PARA ASSENTO, 18 LTS

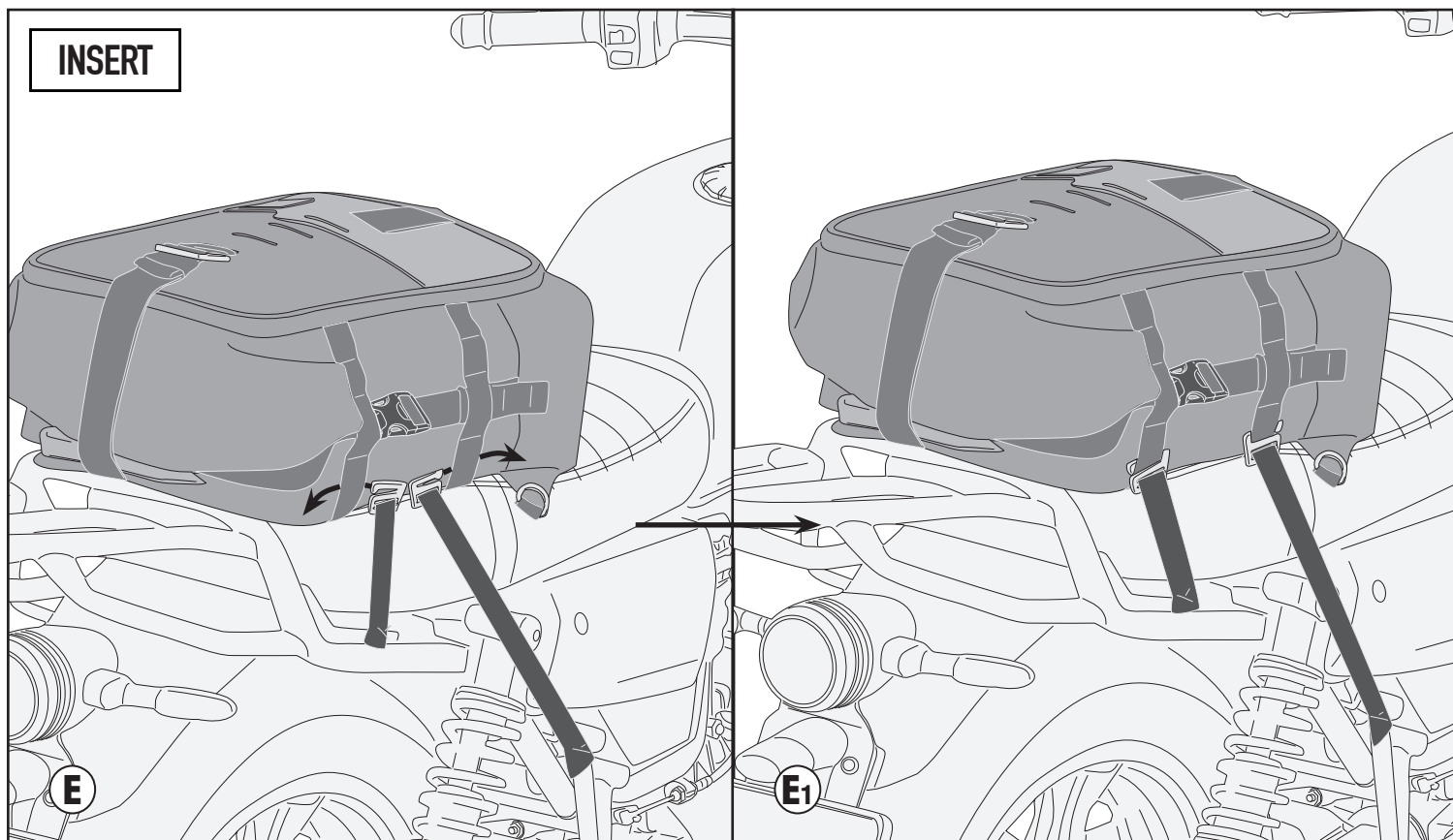
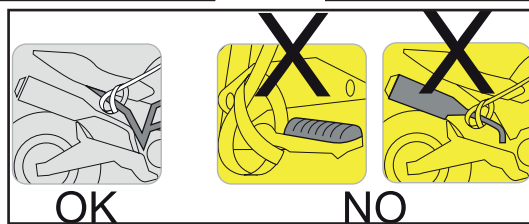
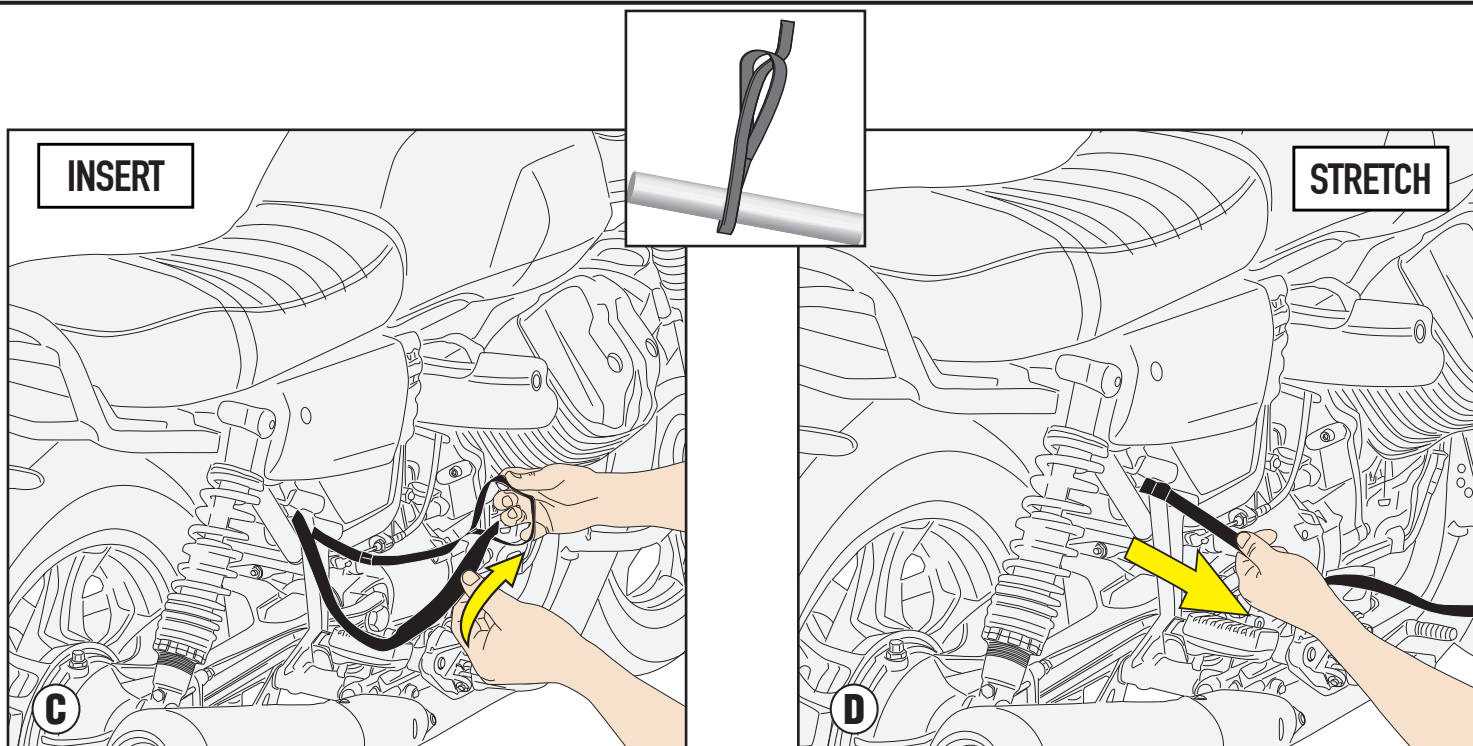


**ATTENZIONE:** Verificare il corretto aggancio della borsa prima di mettersi in marcia.  
**WARNING:** Fasten the bag securely before setting off.  
**ATTENTION:** Vérifier la bonne accroche de sacoche avant la mise en route.  
**ACHTUNG:** Prüfen Sie bitte die Befestigung die Tasche bevor Sie fahren  
**ATENCIÓN:** Comprobar si esta correcto el anclaje de la bolsa antes de ponerse en marcha.  
**ATENÇÃO:** Verificar se correta fixação da Bolsa antes de começar.



# CRM101

ZAINO TRASFORMABILE IN BORSA DA SELLA, 18 LT - RUCKSACK WHICH CAN ALSO BE USED AS A SADDLE BAG, 18 LTR  
IN SATTeltasche UMWANDELBARER RUCKSACK, 18 L - SAC À DOS CONVERTIBLE EN SAC DE SELLE, 18 LITRES  
MOCHILA TRANSFORMABLE EN BOLSA SILLÍN, 18 LTS - MOCHILA MODULÁVEL EM BOLSA PARA ASSENTO, 18 LTS



# CRM101

ZAINO TRASFORMABILE IN BORSA DA SELLA, 18 LT - RUCKSACK WHICH CAN ALSO BE USED AS A SADDLE BAG, 18 LTR  
IN SATTeltasche UMWANDELBARER RUCKSACK, 18 L - SAC À DOS CONVERTIBLE EN SAC DE SELLE, 18 LITRES  
MOCHILA TRANSFORMABLE EN BOLSA SILLÍN, 18 LTS - MOCHILA MODULÁVEL EM BOLSA PARA ASSENTO, 18 LTS

**ATTENZIONE:** Per Garantire L'impermeabilità Della Borsa Seguire Le Istruzioni Per La Chiusura.

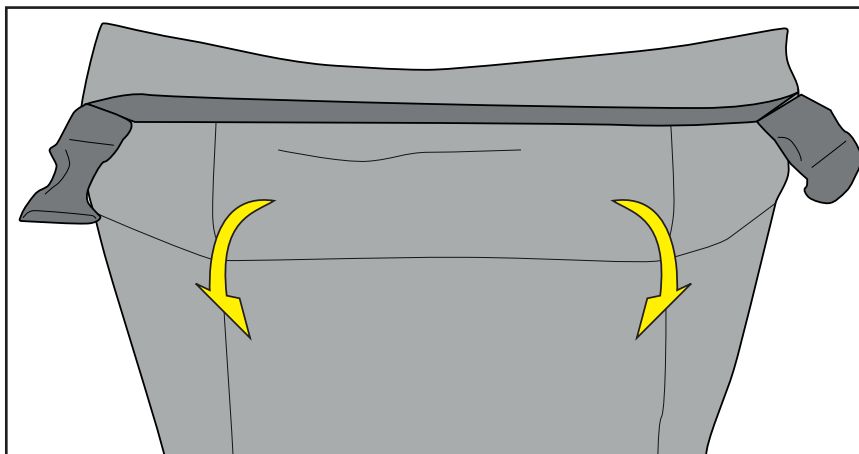
**WARNING:** To Guarantee The Bag's Impermeability, Follow The Closing Instructions.

**ATTENTION:** Permet De Garantir L'impermeabilité Du Sac, Suivre Les Instructions De Fermeture.

**ACHTUNG:** Um Die Undurchlässigkeit Der Tasche Zu Garantieren, Folgen Sie Bitte Den Anweisungen Zum Verschließen Der Tasche.

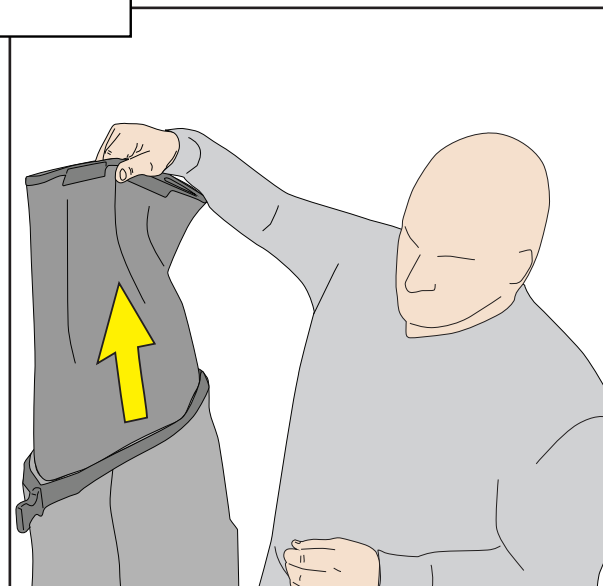
**ATENCIÓN:** Para Garantizar La Impermeabilidad De La Bolsa, Seguir Las Instrucciones De Cierre.

**ATENÇÃO:** Para Garantir A Impermeabilidade Da Bolsa Seguir As Instruções Para A Fechadura.



- ARROTOLARE PER 3 VOLTE SU SE STESSA L'APERTURA DELLA BORSA PER GARANTIRE L'IMPERMEABILITÀ
- TO ENSURE WATER RESISTANCE, IT IS ESSENTIAL TO ROLL DOWN THE OPENING OF THE BAG 3 TIMES
- ENROULER L'OUVERTURE DU SAC 3 FOIS SUR ELLE-MÊME AFIN D'ASSURER LA RÉSISTANCE À L'EAU
- UM ZU GARANTIEREN, DASS DIE TASCHE WASSERRESISTENT IST, IST ES NOTWENDIG DEN VERSCHLUSS 3X EINZUROLLEN.
- ENROLLAR 3 VECES SOBRE SÍ MISMA LA APERTURA DE LA BOLSA PARA GARANTIZAR LA IMPERMEABILIDAD.
- ENROLAR PARA 3 VEZES A ABERTURA DA BOLSA PARA GARANTIR A SUA IMPERMEABILIDADE

## REMOVABLE INNER BAG



# CRM101

ZAINO TRASFORMABILE IN BORSA DA SELLA, 18 LT - RUCKSACK WHICH CAN ALSO BE USED AS A SADDLE BAG, 18 LTR  
IN SATTeltasche UMWANDELBARER RUCKSACK, 18 L - SAC À DOS CONVERTIBLE EN SAC DE SELLE, 18 LITRES  
MOCHILA TRANSFORMABLE EN BOLSA SILLÍN, 18 LTS - MOCHILA MODULÁVEL EM BOLSA PARA ASSENTO, 18 LTS

