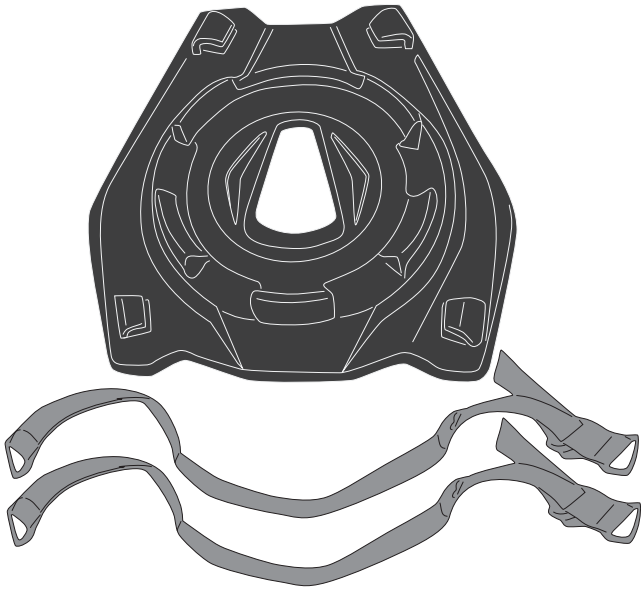


# S430 - KS430

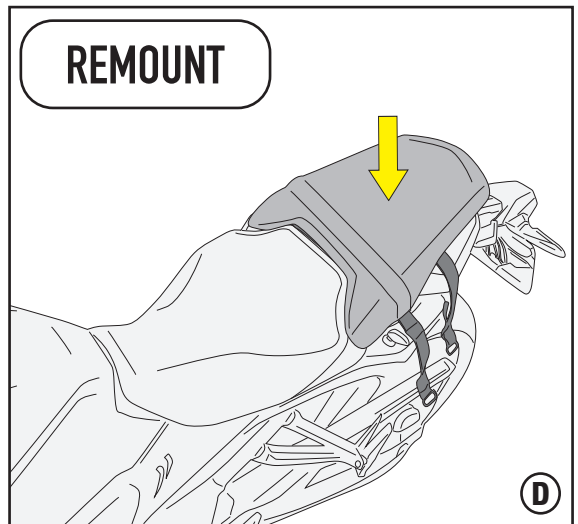
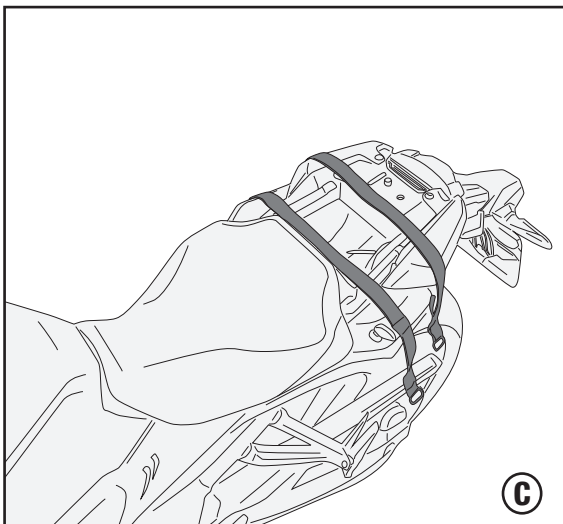
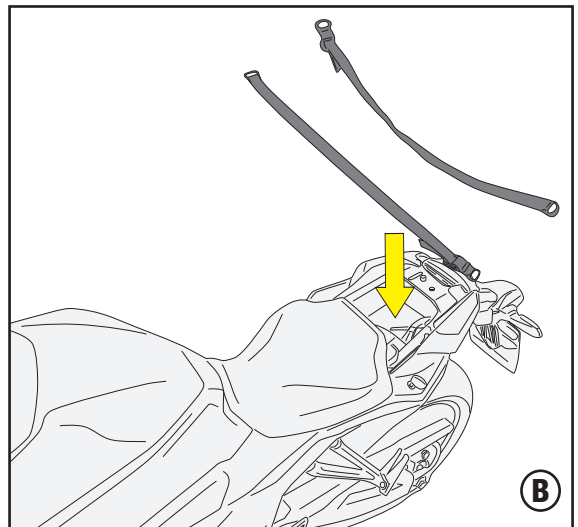
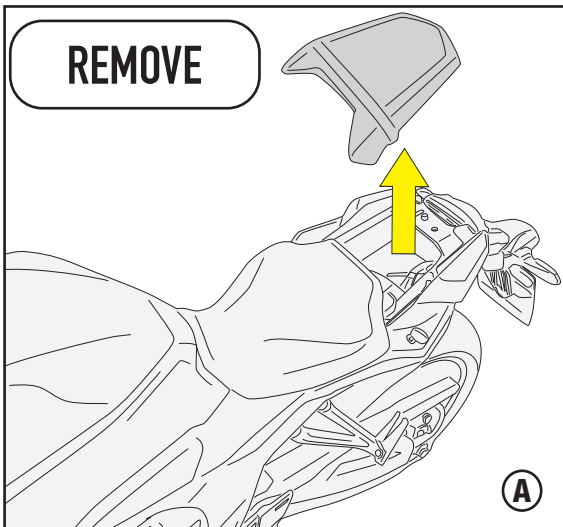
## SEATLOCK



**ONLY FOR BAGS WITH FLAT BASE,  
NOT FOR THOSE WITH A CONTOURED/CURVED BASE**

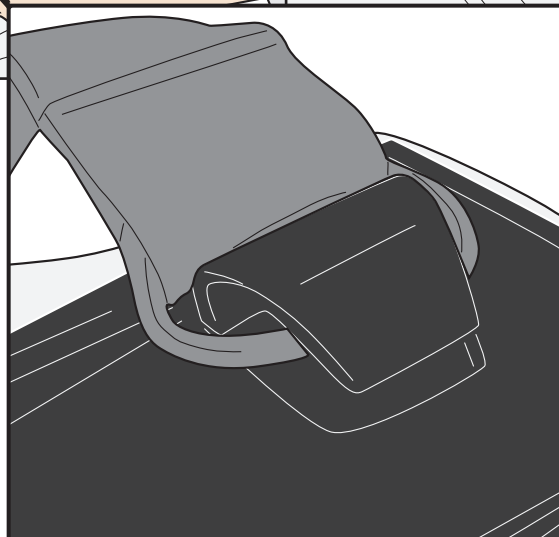
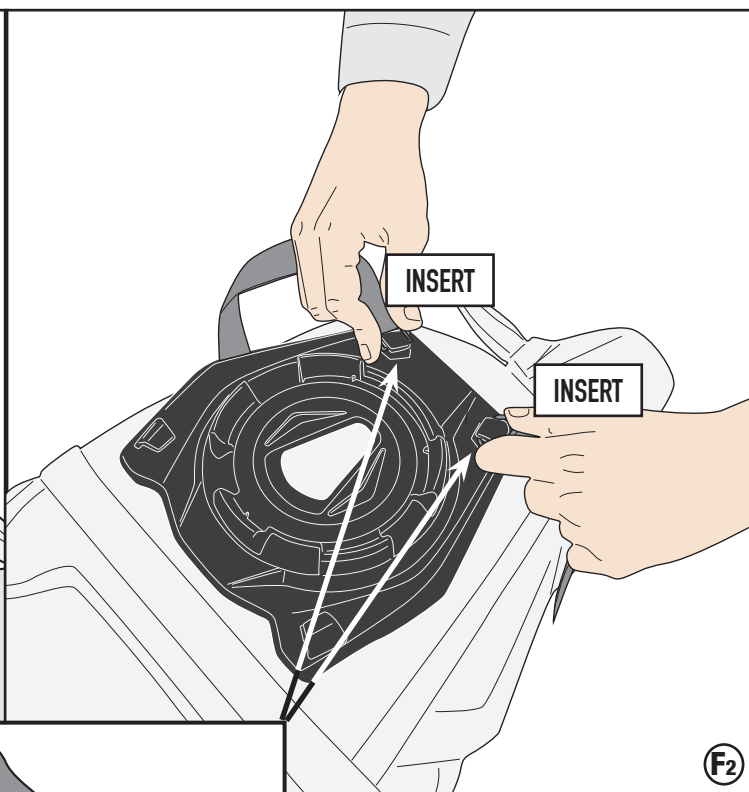
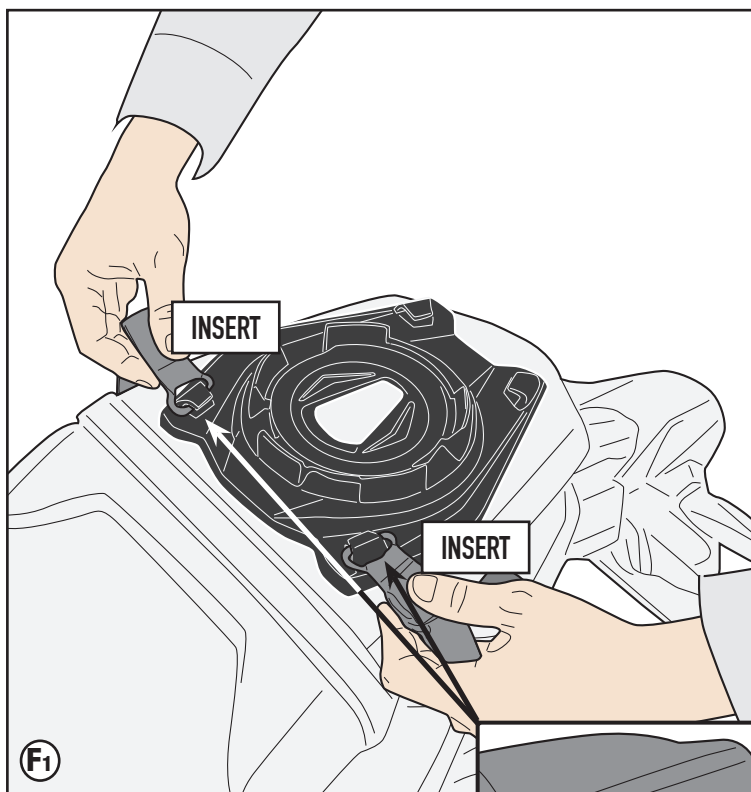
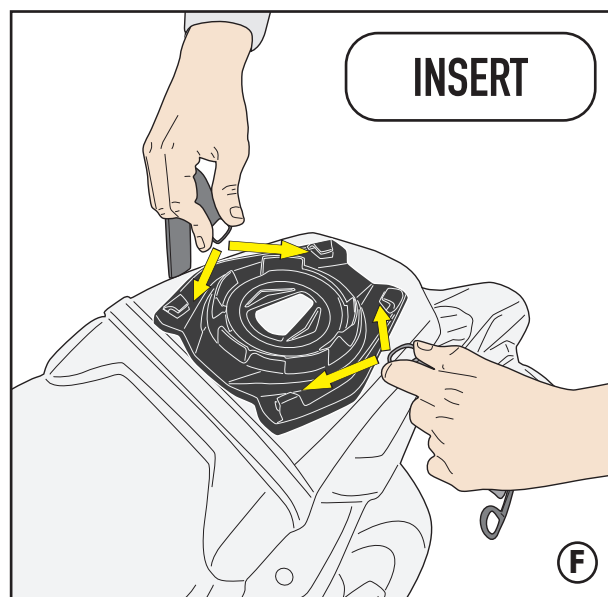
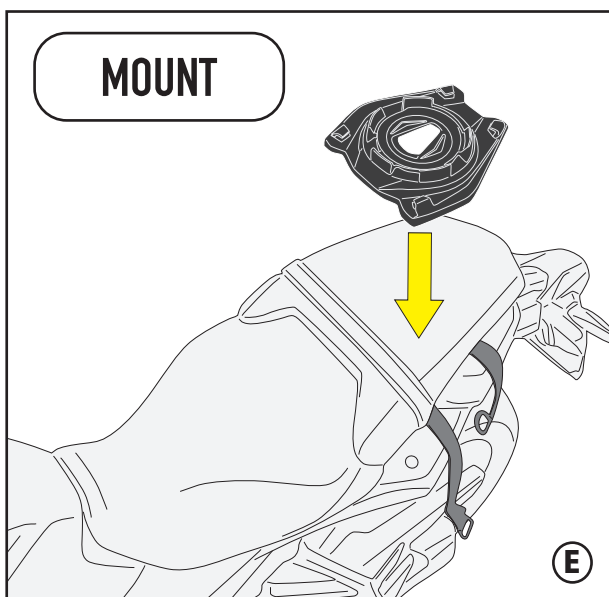
**ATTENZIONE:** Verificare il corretto aggancio prima di mettersi in marcia.  
**WARNING:** Fasten securely before setting off.  
**ATTENTION:** Vérifier la bonne accroche avant la mise en route.  
**ACHTUNG:** Prüfen Sie bitte die Befestigung bevor Sie fahren  
**ATENCIÓN:** Comprobar si esta correcto el anclaje antes de ponerse en marcha.  
**ATENÇÃO:** Verificar se correta fixação antes de começar.

### MOUNTING ON SADDLE FIRST OPTION



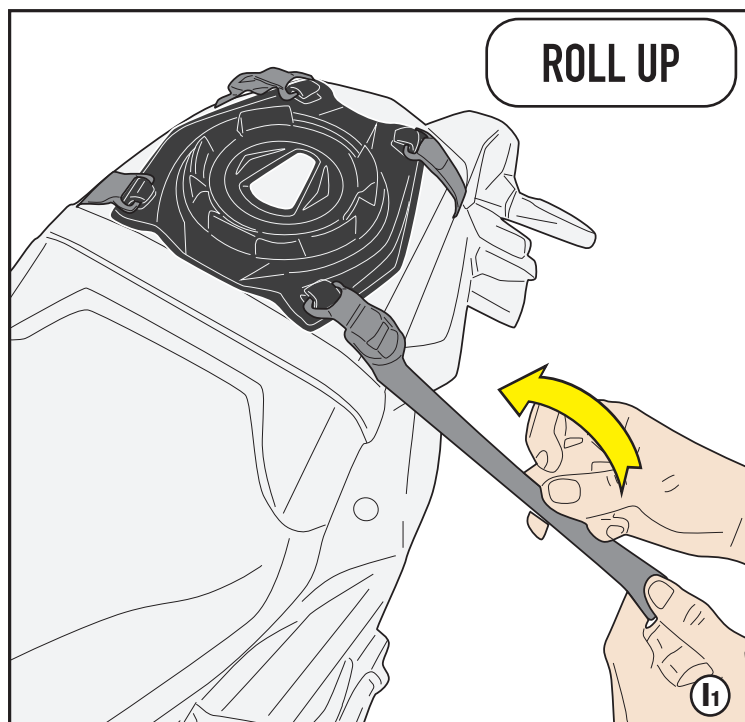
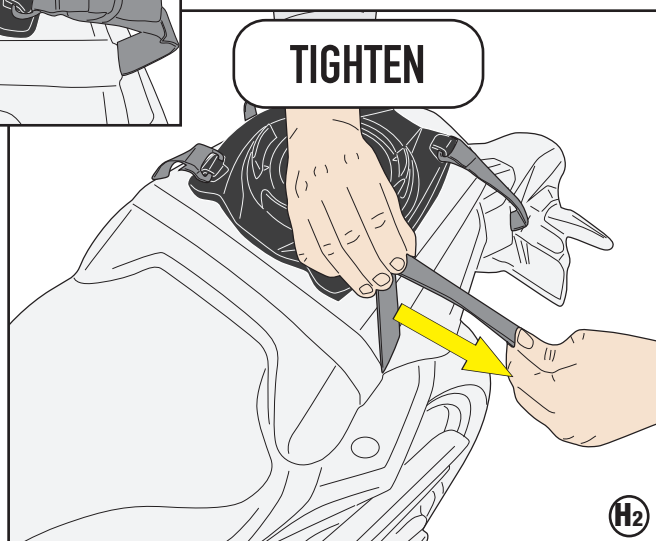
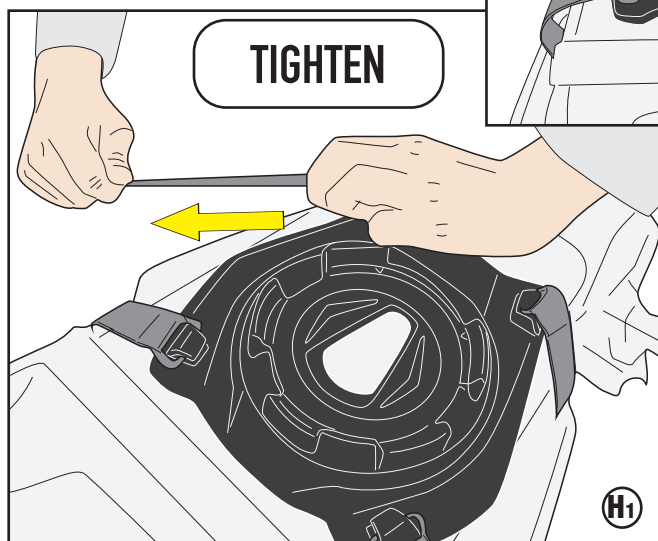
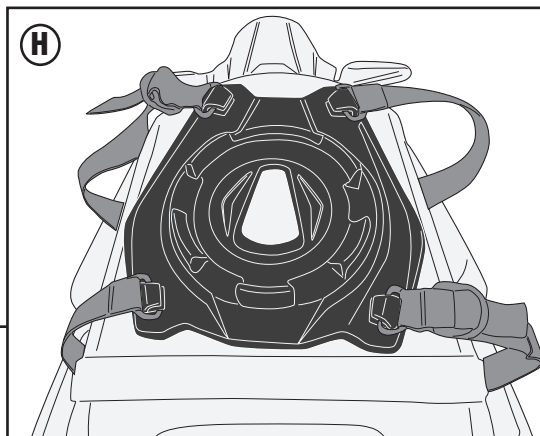
# S430 - KS430

## SEATLOCK



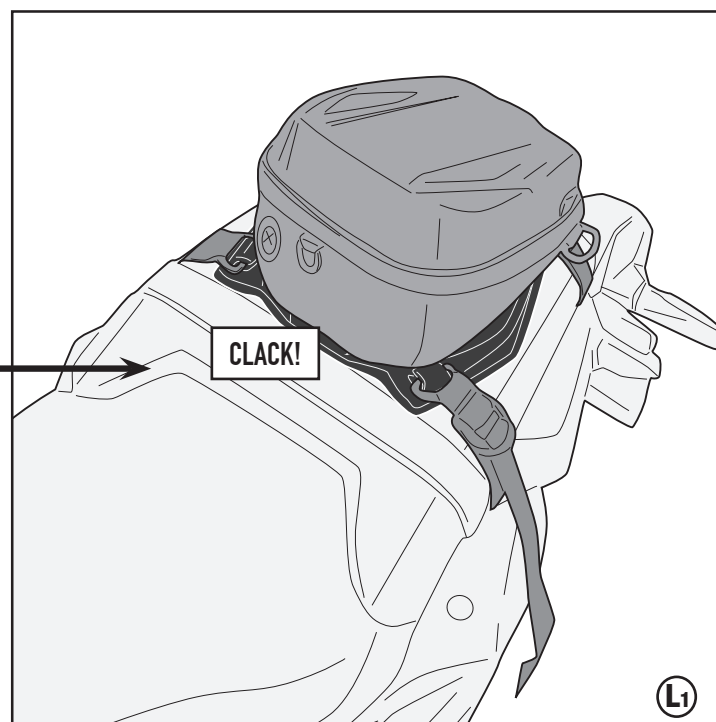
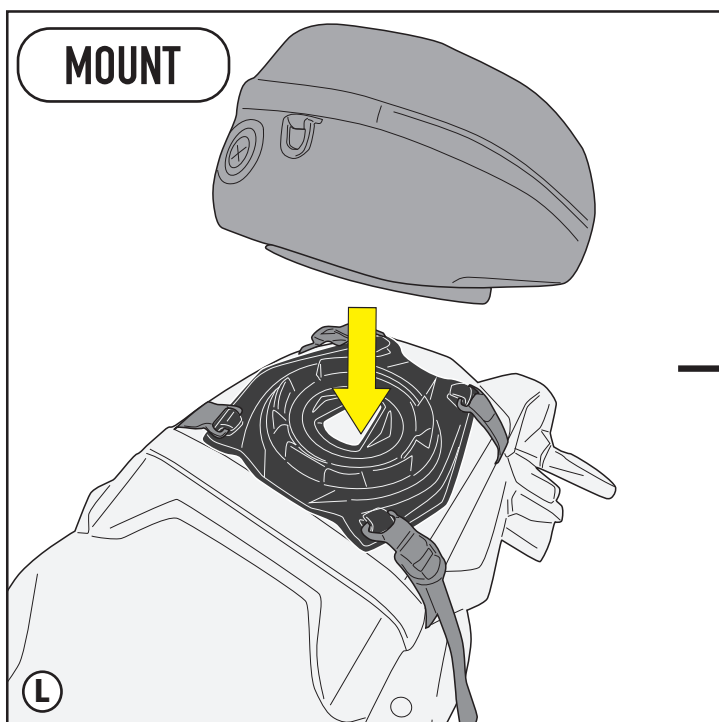
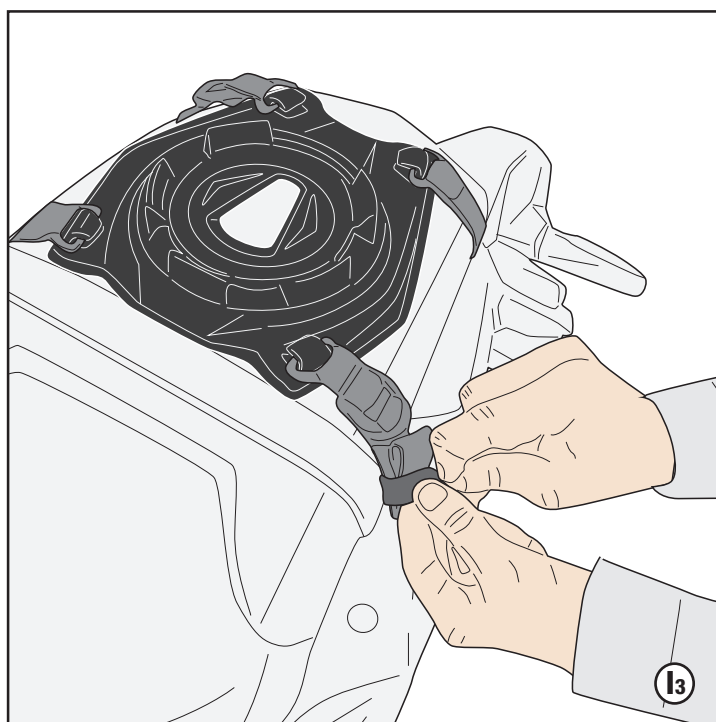
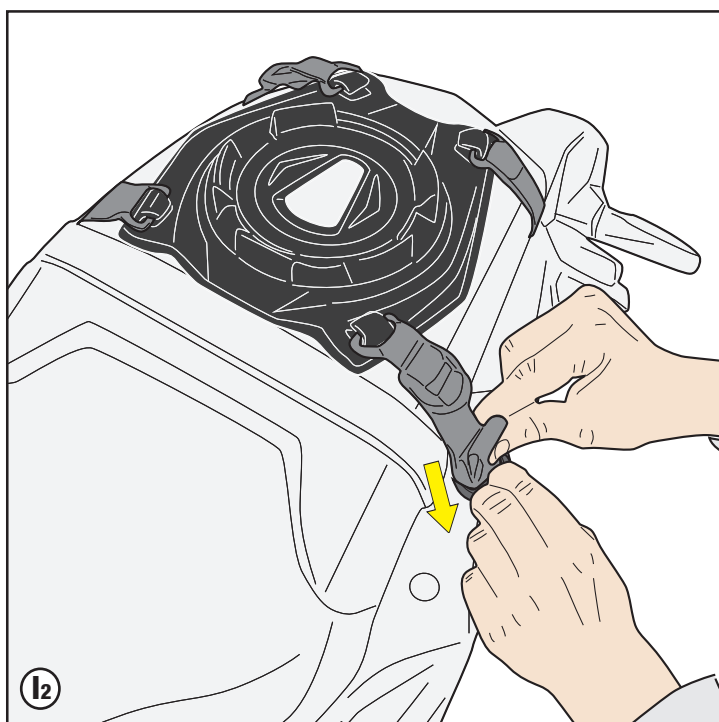
# S430 - KS430

## SEATLOCK



# S430 - KS430

## SEATLOCK

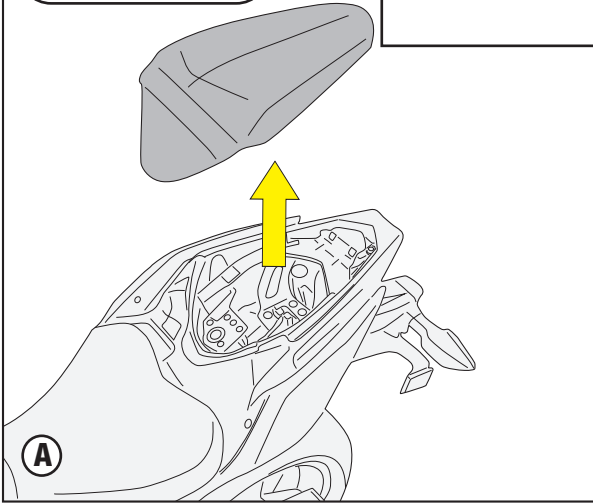


# S430 - KS430

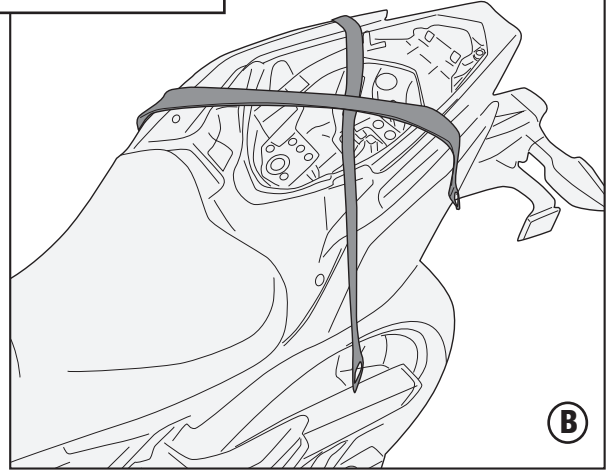
## SEATLOCK

### MOUNTING ON SADDLE SECOND OPTION

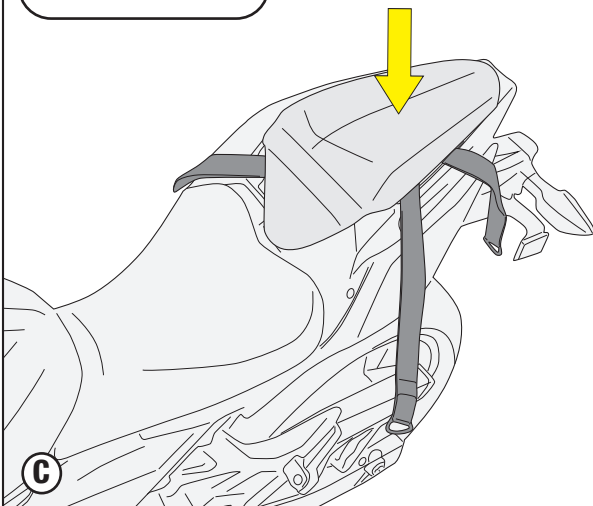
REMOVE



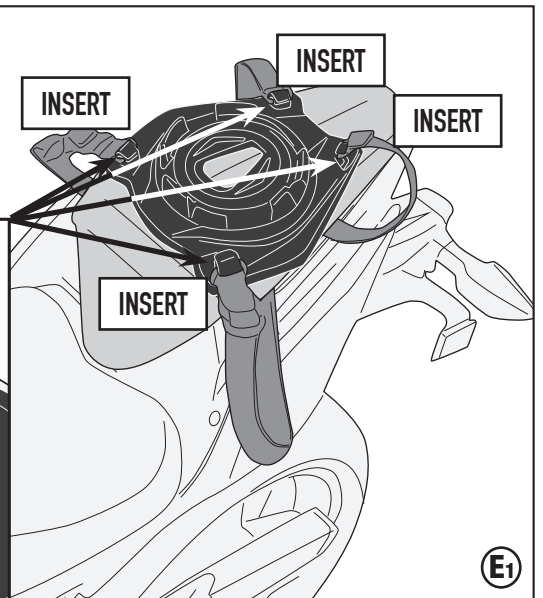
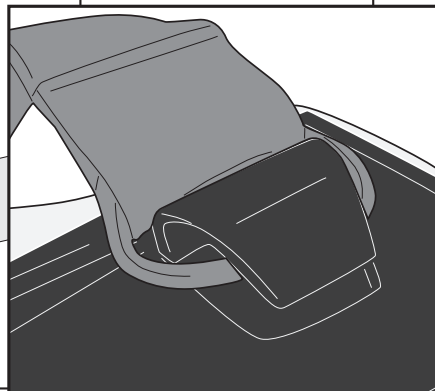
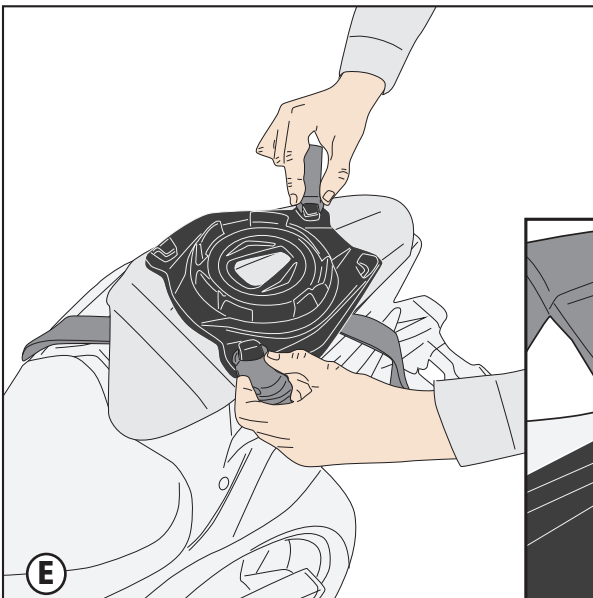
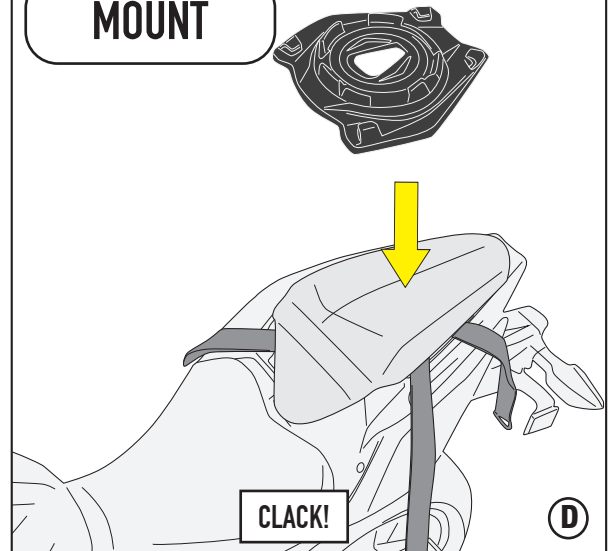
CROSSED BELTS



REMOUNT

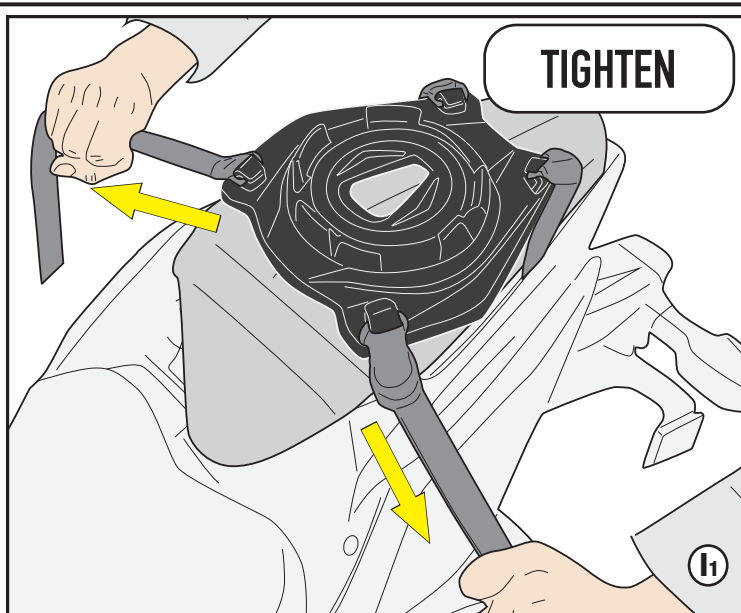
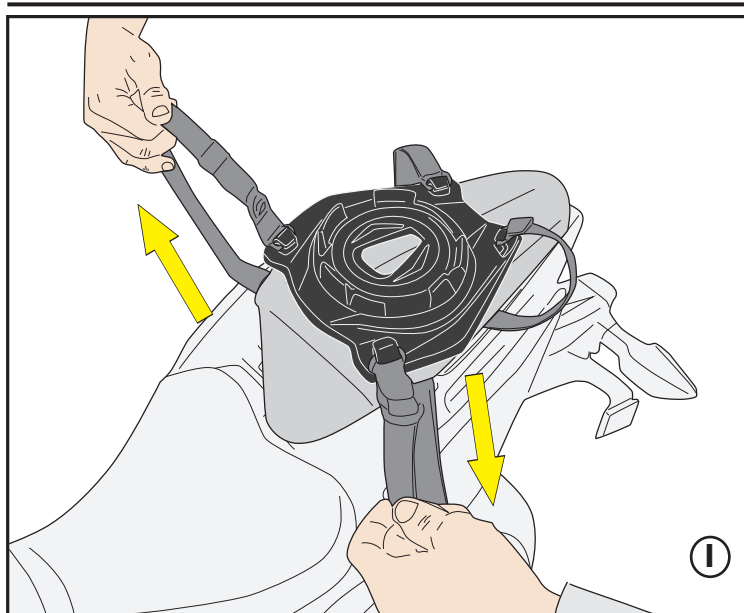


MOUNT

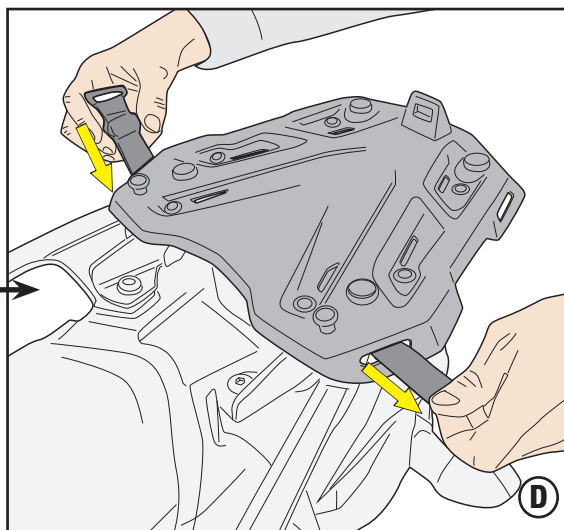
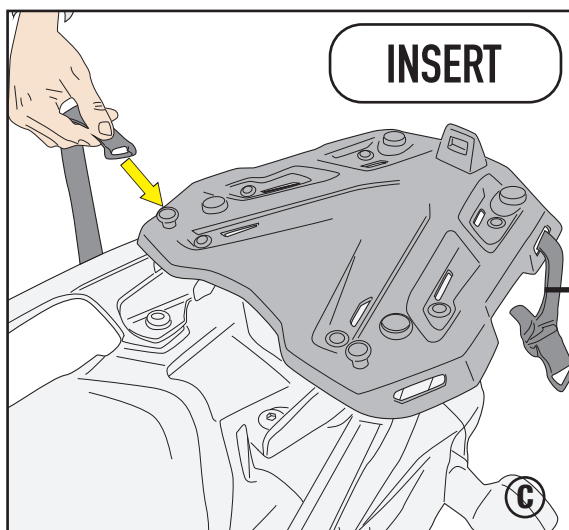
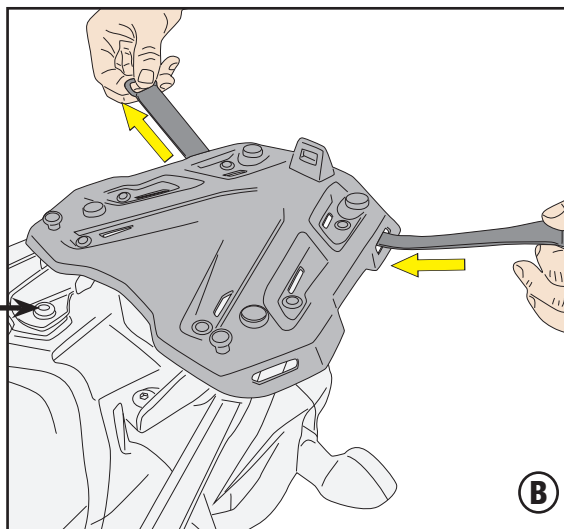
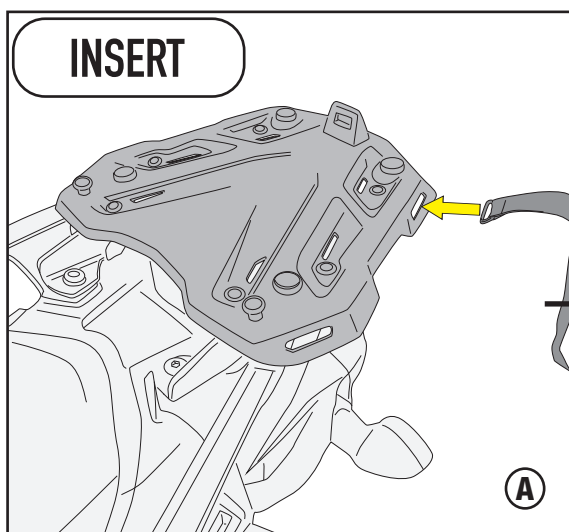


# S430 - KS430

## SEATLOCK

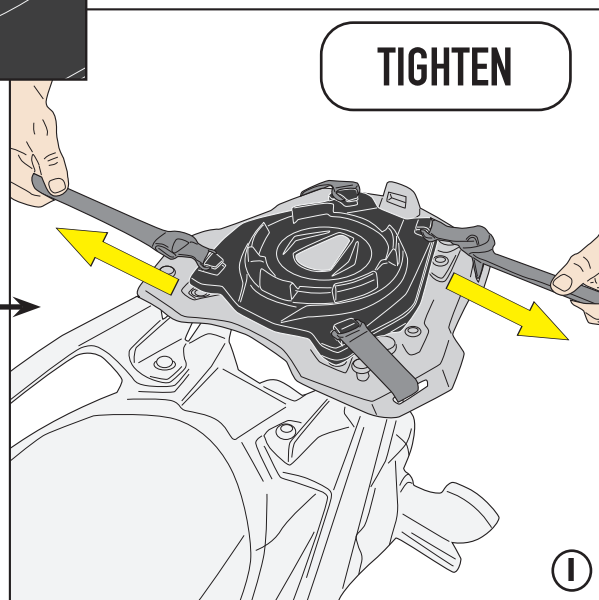
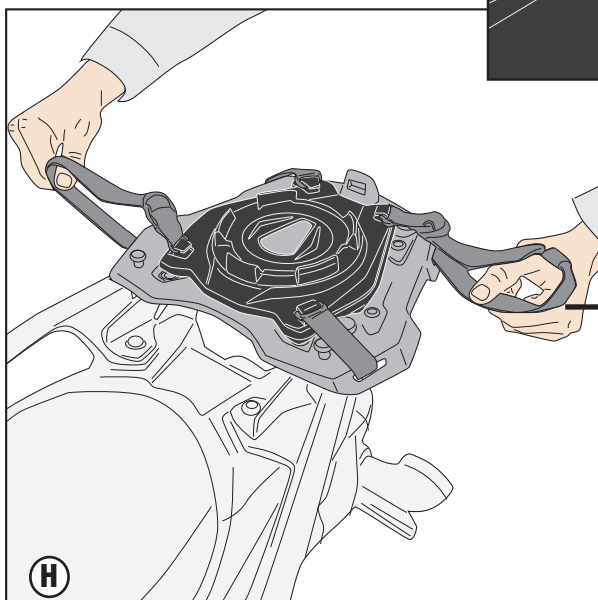
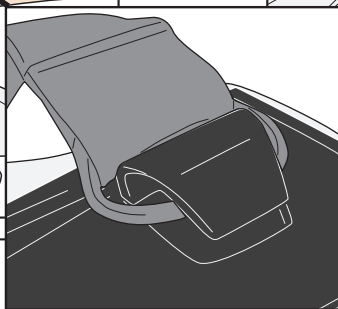
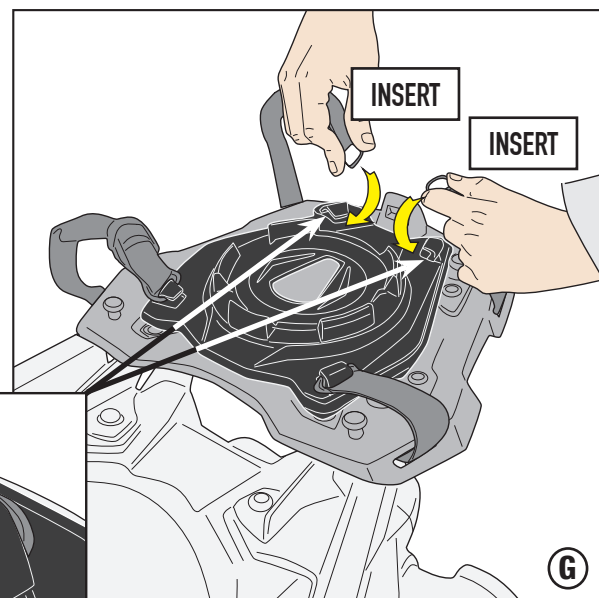
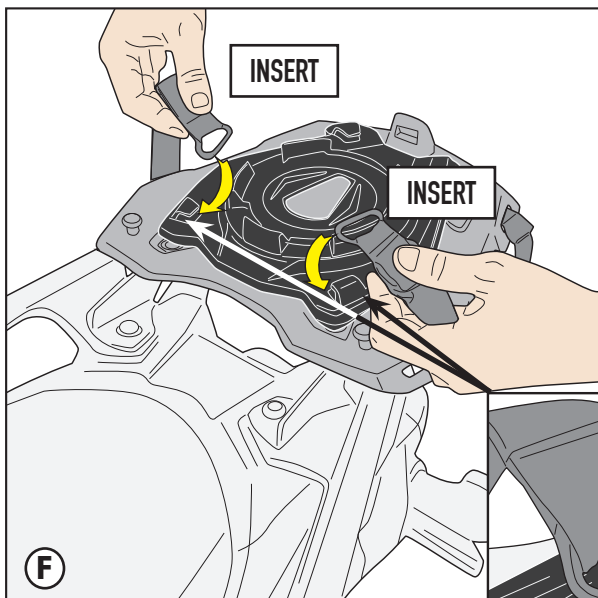
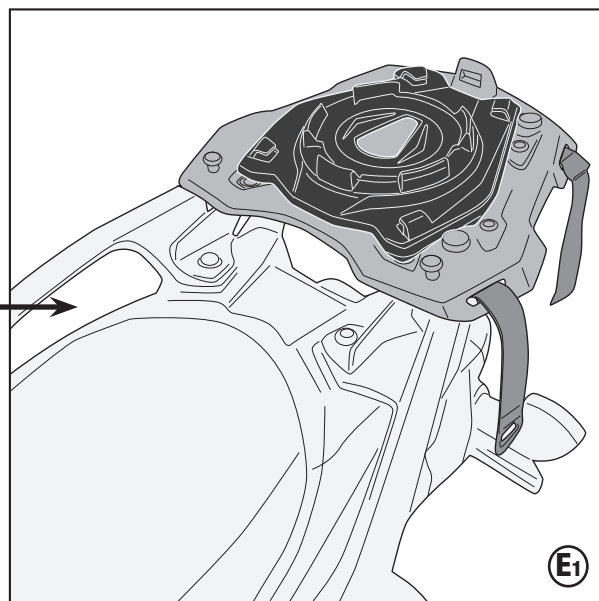
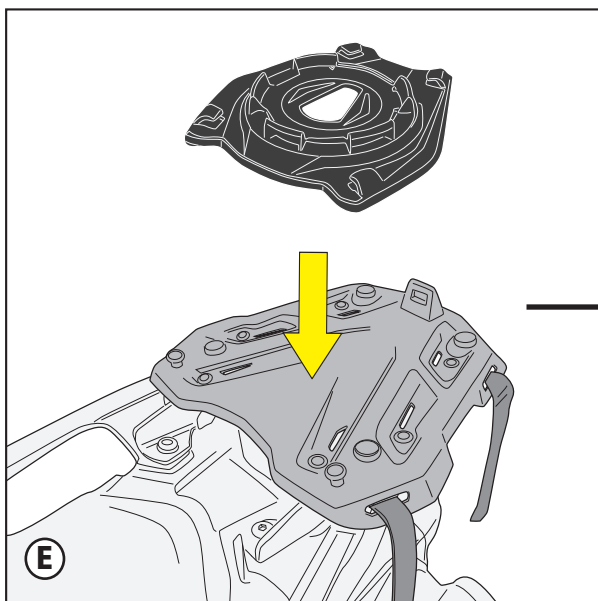


### MOUNTING ON PLATE



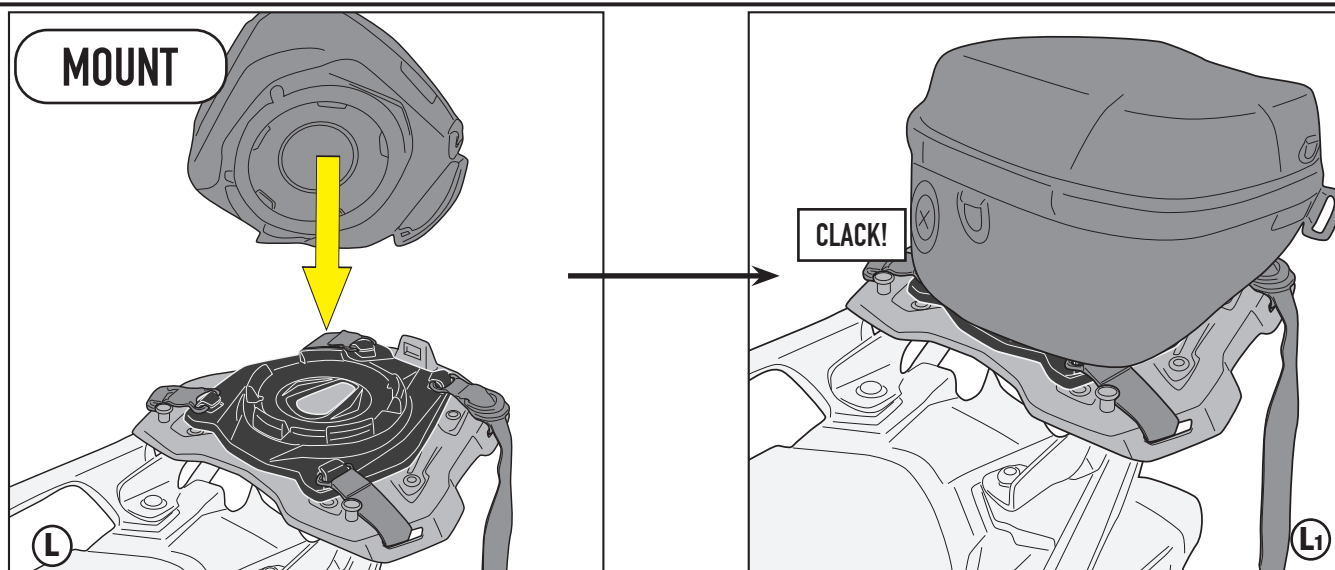
# S430 - KS430

## SEATLOCK



# S430 - KS430

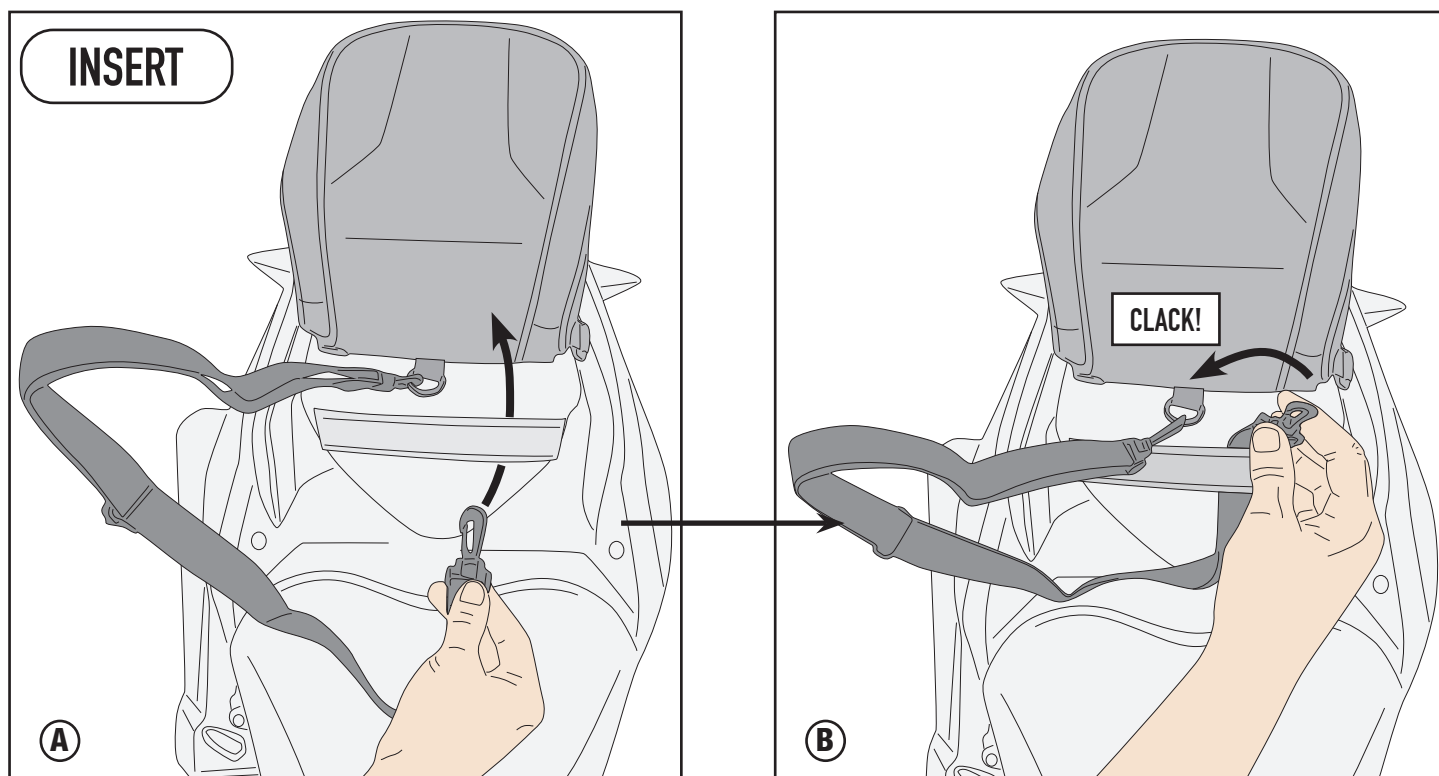
## SEATLOCK



- VERIFICARE ATTENTAMENTE CHE LA BORSA NON PREGIUDICI L'ORIGINARIA GUIDABILITÀ DEL MEZZO
- PLEASE CHECK CAREFULLY THAT THE BAG WILL NOT EFFECT THE ORIGINAL DRIVEABILITY
- BITTE PRÜFEN SIE DASS DIESES MODELL DIE ORIGINALFAHRT DES FAHRZEUGES NICHT BEEINTRÄCHTIGT
- VEUILLEZ VÉRIFIER SOIGNEUSEMENT QUE LA SACOCHE N'AFPECTERA PAS LA MANIABILITÉ DU VÉHICULE
- VERIFICAR ATENTAMENTE QUE LA BOLSA NO PERJUDIQUE LA ORIGINAL CONDUCCIÓN DEL VEHÍCULO
- VERIFICAR CUIDADOSAMENTE QUE A BOLSA NÃO PREJUDIQUE A CONDUÇÃO ORIGINAL DO VEICULO

## SECURITY BELT

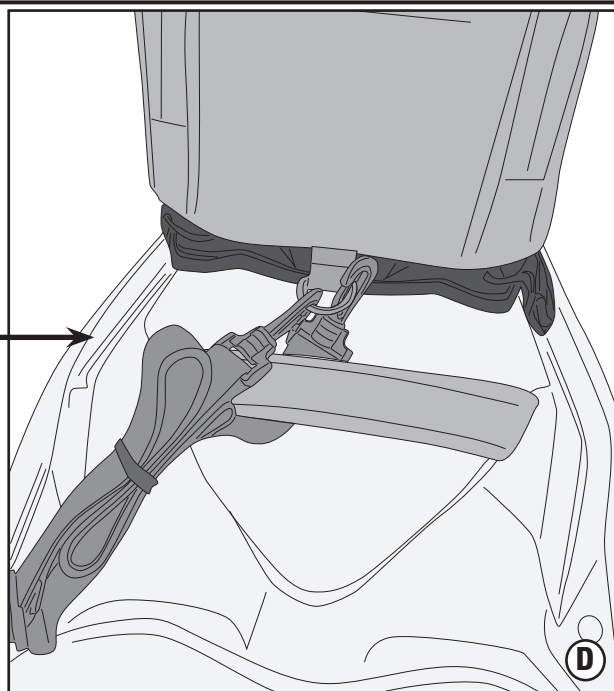
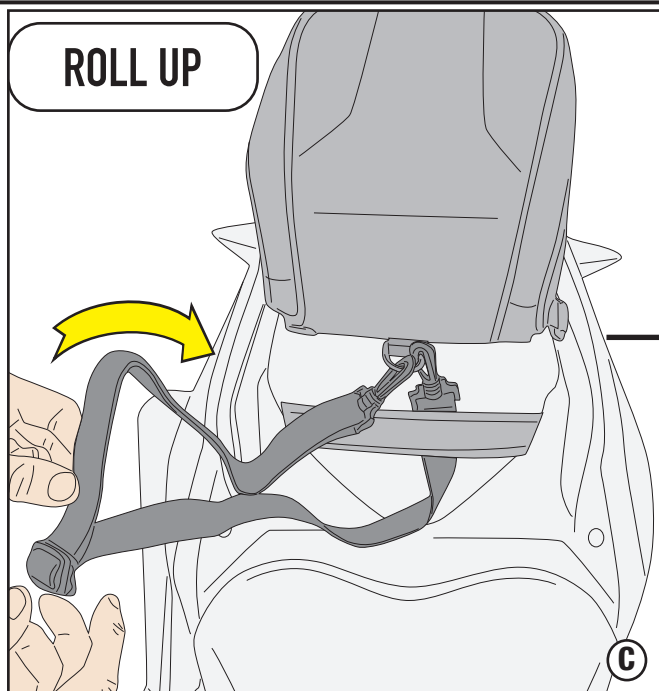
### FIRST OPTION



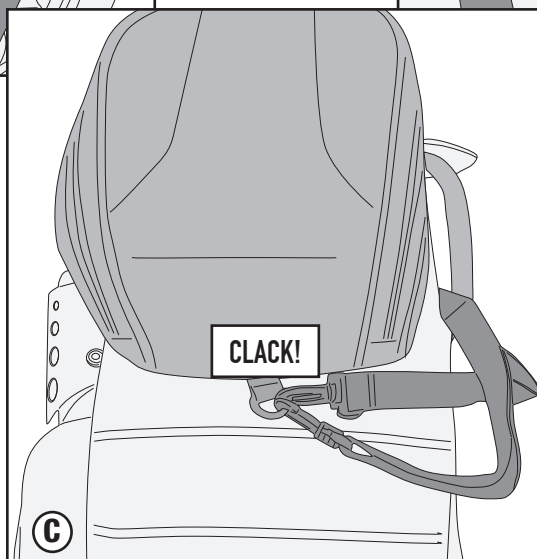
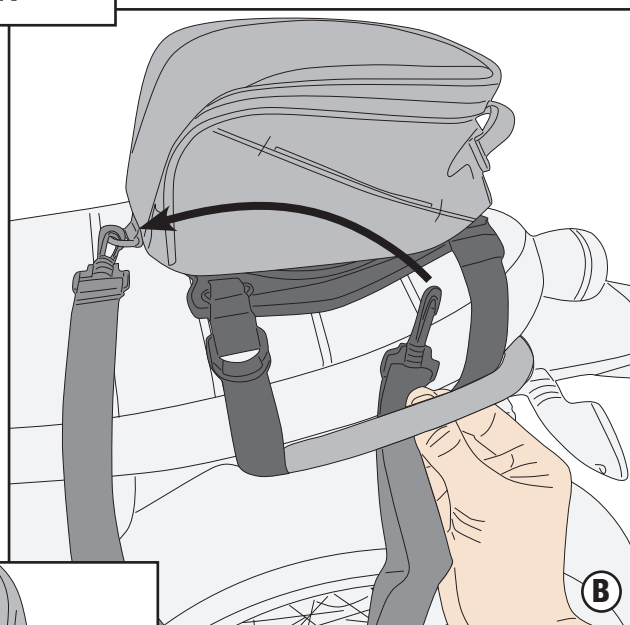
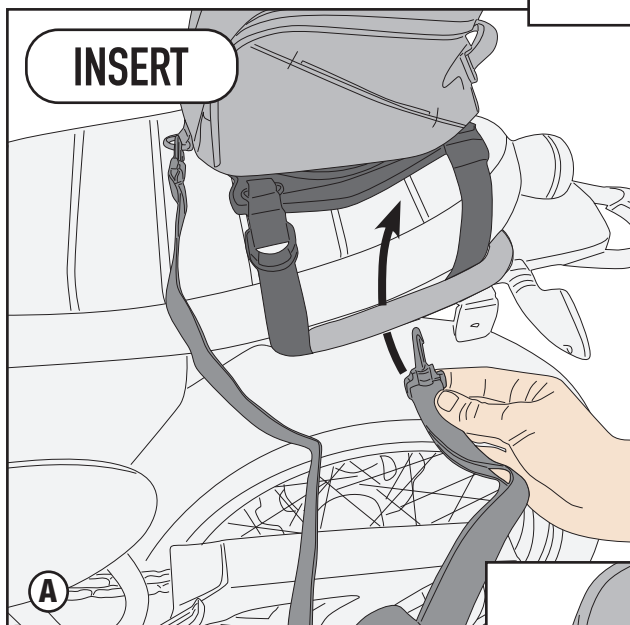


# S430 - KS430

## SEATLOCK



### SECOND OPTION

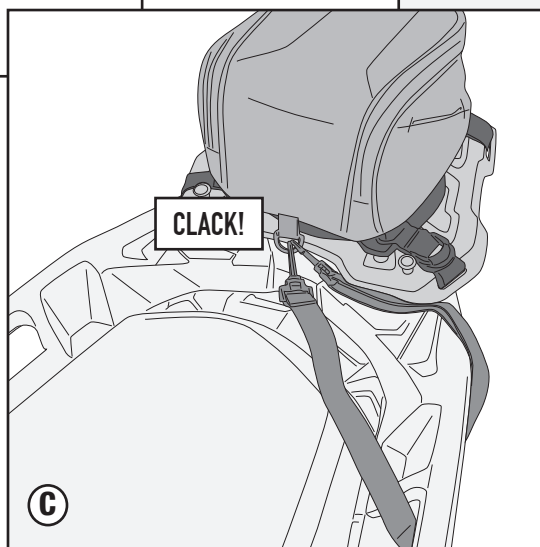
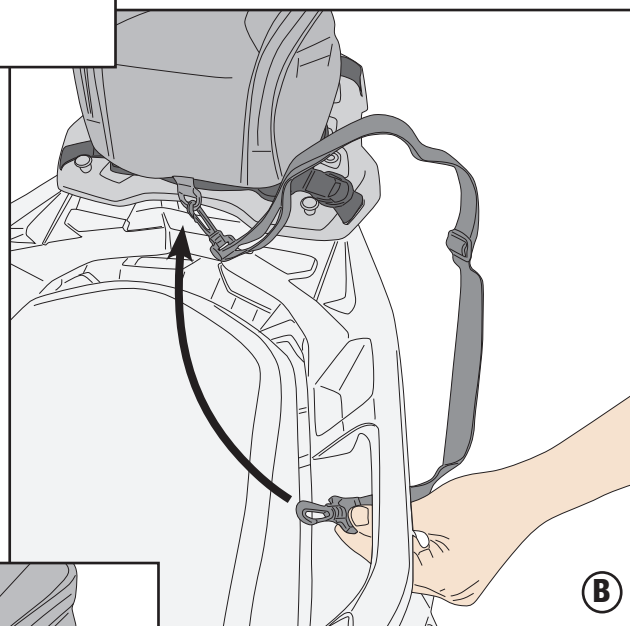
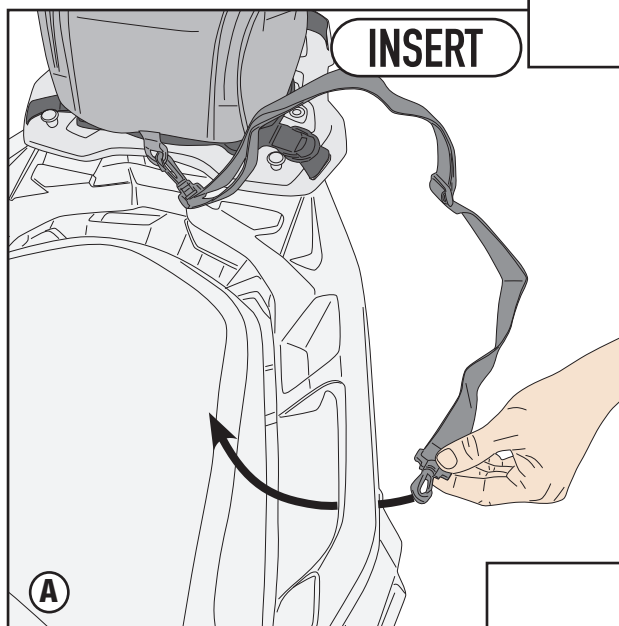


# S430 - KS430

## SEATLOCK

INSERT

THIRD OPTION



FOURTH OPTION

